

HAND SIGNALS

Scaffold & Access Industry Association

400 Admiral Blvd

Kansas City, MO 64106

Ph 816-595-4860 · Fax 816-472-7765

www.saiaonline.org

These signals are to be used when verbal communication is hindered. Example: noisy warehouse or busy plant site.

Workers **must** first be orientated in use of signals before using.

1st – State the Amount required

2nd - Indicate the Scaffold required

3rd – Indicate the Length or Size required

Disclaimer

These guidelines do not purport to be all-inclusive nor to supplant or replace any manufacturer or other additional safety and precautionary measurers.

They are intended neither to conflict with nor to supersede the requirements of law or of governmental regulations, codes and ordinances. The user must make reference to such provisions.

The ownership of the copyright for this guide belongs to the Scaffold & Access Industry Association Inc.

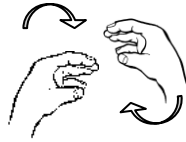
RIGHT ANGLE CLAMP

Tips of fingers point into open palm



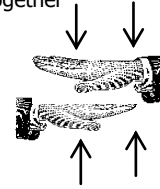
SWIVEL CLAMP

Cup hands with wrist twisting action



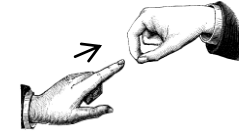
PLANK (and Decks)

Open palms and tap together



LOCKING PIN

Index finger passing through eye of opposite hand



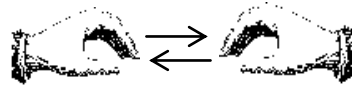
END-TO-END JOINER

Close fists – tapping thumbs in a horizontal motion



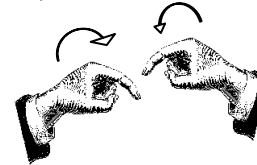
TUBE

Cup hands with horizontal motion



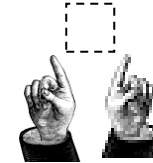
DECK with HOOK

Tap hands as planks then cup Hands like deck hooks



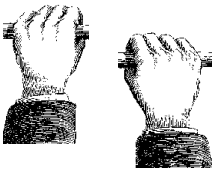
GRATING OR PLYWOOD

Show imaginary box style



LADDER

Simulate climbing action



STARTER BRACKET

Simulate starting a car action



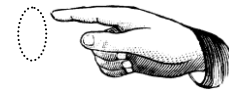
TOE BOARD

Indicating toe portion

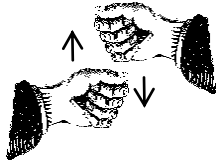


WIRE – TYPE

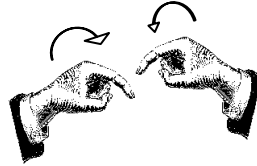
Index finger pointed in circular motion



STANDARD or Post
Closed fists, vertical tapping
action



LEDGER or Horizontal
Index finger showing
hooked ends.



BRACE
Extended arms crossed over



SIDE BRACKET
Cock arm into hip socket



SCREW JACK
Open hand under index
finger, circular motion



COLLAR
Indicating collar on self

